

E1.S CABLE CONNECTOR FORM FACTOR

JEDEC SOLID STATE  
PRODUCT OUTLINE  
Copyright © 2022 JEDEC

THIS *REGISTERED OUTLINE* HAS BEEN PREPARED BY THE JEDEC JC-11 COMMITTEE  
AND REFLECTS A PRODUCT WITH ANTICIPATED USAGE IN THE ELECTRONICS INDUSTRY;  
CHANGES ARE LIKELY TO OCCUR.

TITLE ENCLOSURE FORM  
FACTOR FOR AUTOMOTIVE SSD  
CONNECTOR, CABLE MOUNT

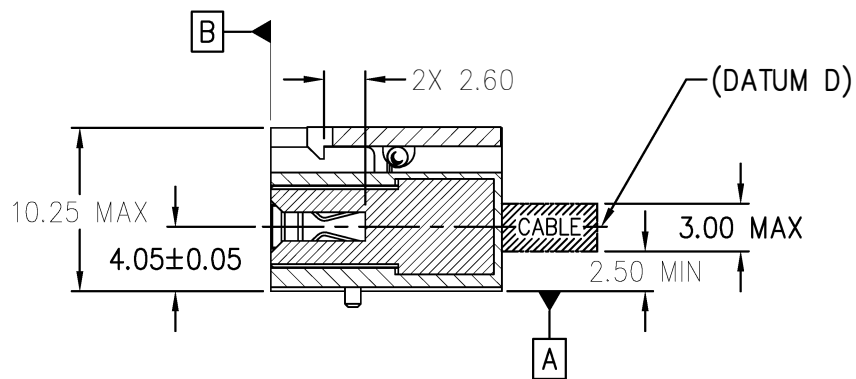
PACKAGE DESIGNATOR  
PBXC-K4\_D#p## -  
MR36p05x14p5Z10p25-HS

NUMBER  
SO-029

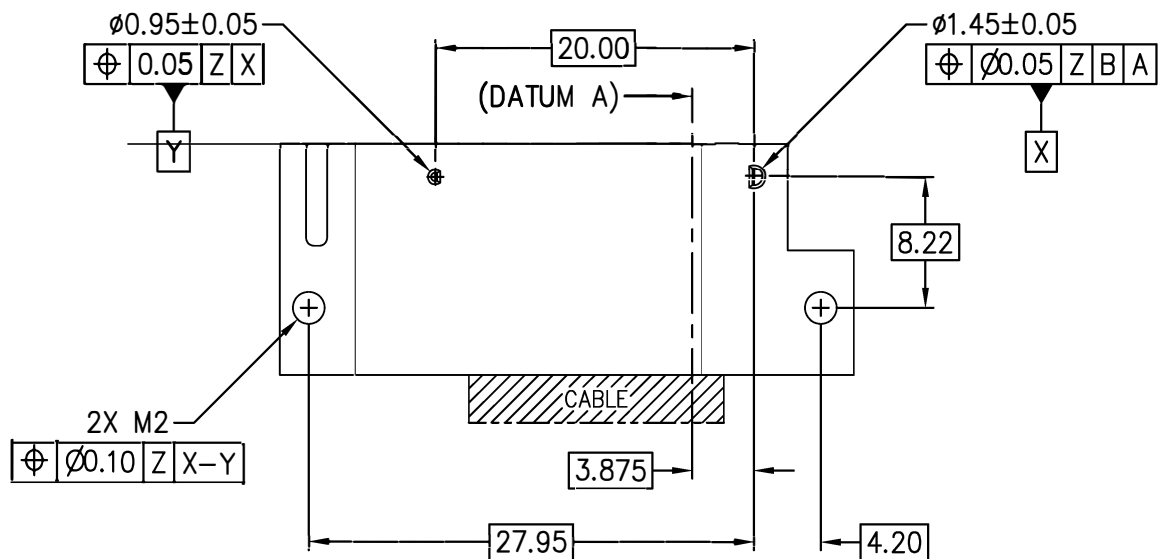
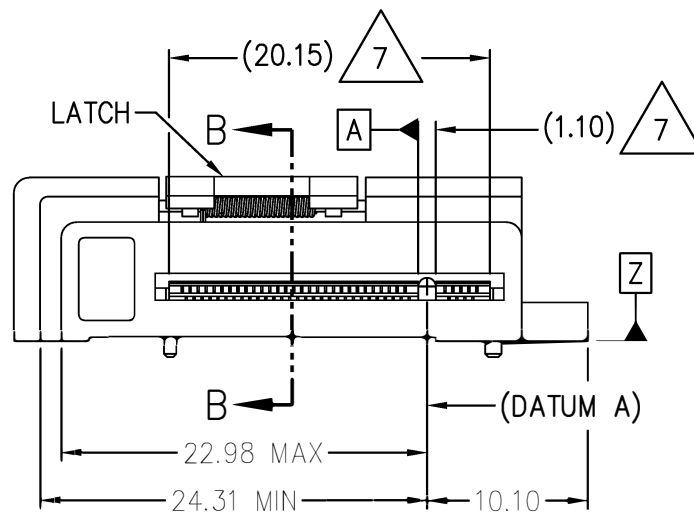
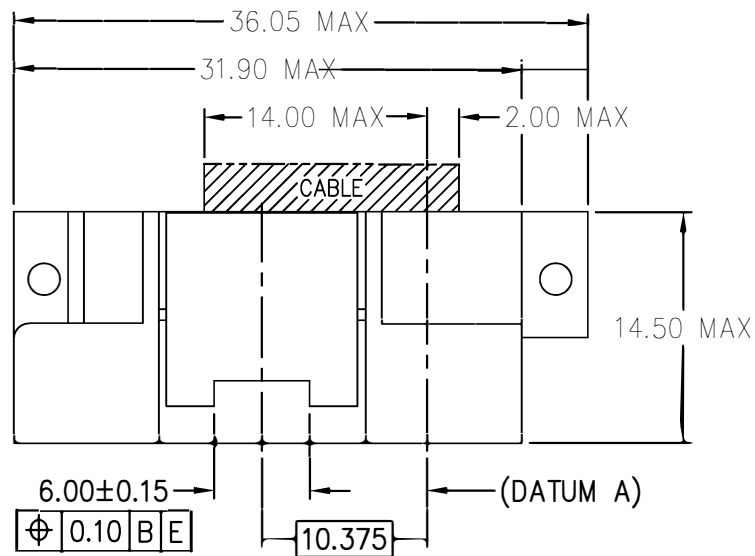
ISSUE  
A

DATE  
JAN 2022

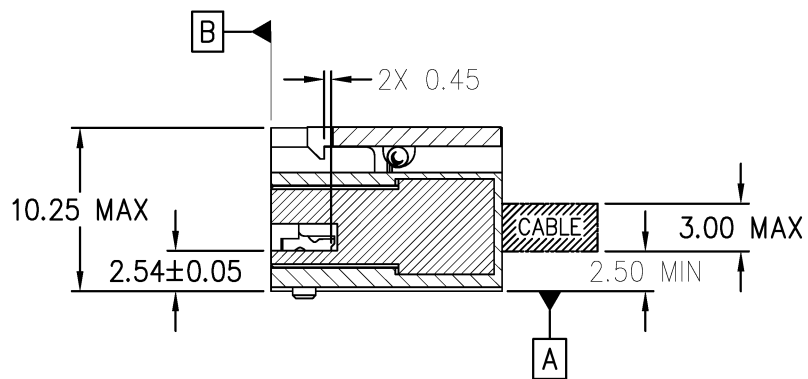
SHEET  
1 OF 6



SECTION A-A



M.2 CABLE CONNECTOR FORM FACTOR



SECTION B-B

NOTES:

1. DIMENSIONING AND TOLERANCING PER ASME Y14.5–2009.
2. TOLERANCES ON ALL DIMENSIONS  $\pm 0.15$  UNLESS OTHERWISE SPECIFIED.
3. ALL DIMENSIONS ARE MM.
4. METAL SURFACE SHALL BE FREE OF BURRS.
5. THIS DOCUMENT DEFINES CONNECTOR ENCLOSURE VOLUMETRIC FOR TWO VARIATIONS OF SSD INTERFACE: E1.S AND M.2 M KEY SSD.

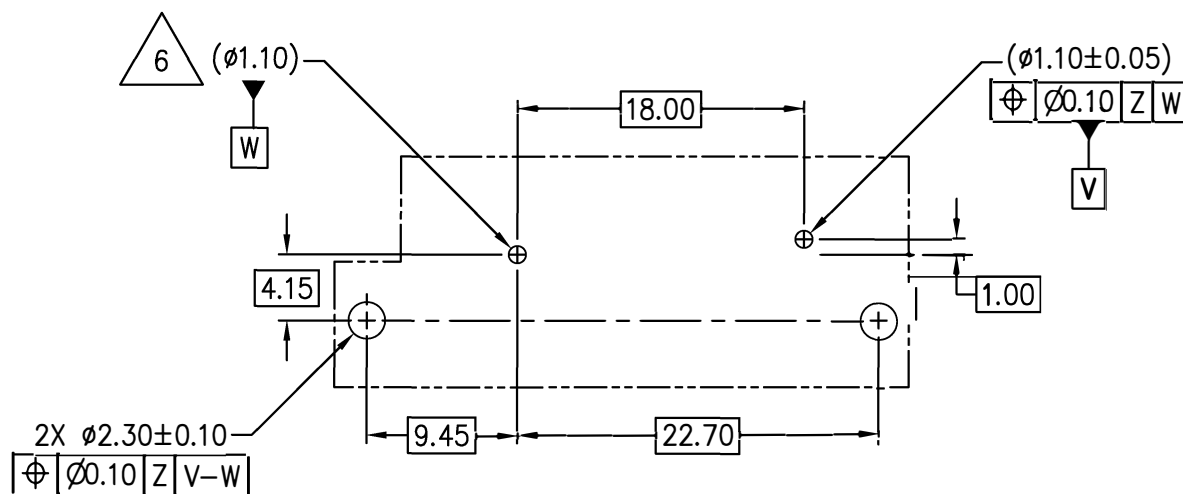


FEATURES REFER TO THE SNIA SFF–TA–1002 SPECIFICATION REV 1.3.



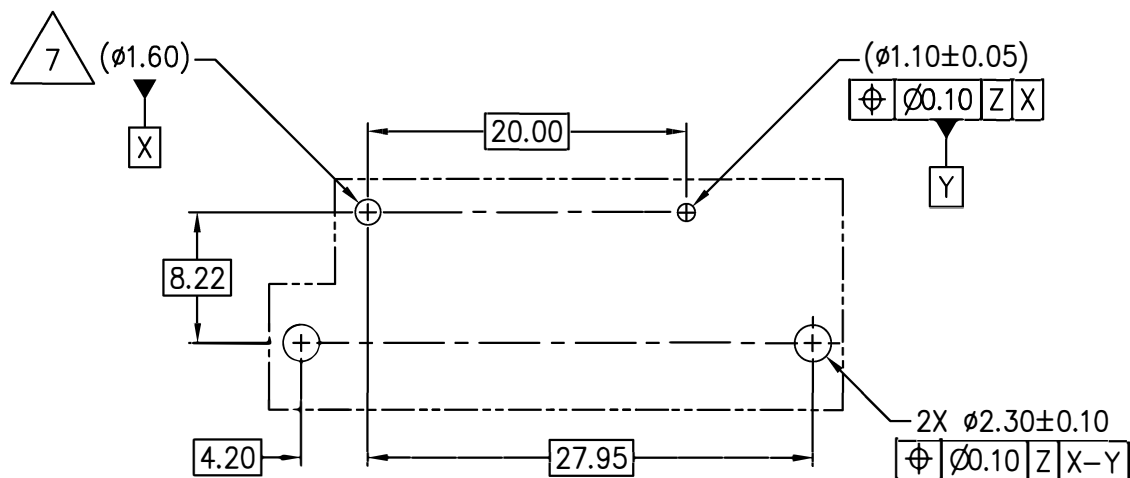
FEATURES REFER TO THE PCI EXPRESS M.2 SPECIFICATION REV 4.0 V1.0.

8. E1.S CABLE CONNECTOR RECOMMENDED FOOTPRINT.



E1.S FOOTPRINT  
DATUM Z: CONNECTOR SEATING PLANE

9. M.2 CABLE CONNECTOR RECOMMENDED FOOTPRINT. FOOTPRINT NEED TO PROVIDE ELECTRICALLY GROUNDED PLATED HOLE FOR M.2 MODULE STAND-OFF SCREW MOUNT. FOLLOW PCI EXPRESS M.2 SPECIFICATION FOR DETAIL IMPLEMENTATION GUIDELINE.



M.2 M KEY FOOTPRINT  
DATUM Z: CONNECTOR SEATING PLANE

10. VARIOUS COMPANIES HAVE ISSUED PATENTS AND RELATED PATENT APPLICATIONS THAT MAY APPLY TO THIS REGISTRATION. IF THE CURRENT ISSUE PATENTS OR LATER PATENTS RESULTING FROM RELATED APPLICATION DO APPLY, THESE COMPANIES INTEND TO COMPLY WITH THE JEDEC PATENT POLICY AND LICENSE UNDER REASONABLE TERMS AND CONDITIONS THAT ARE DEMONSTRABLY FREE OF ANY UNFAIR DISCRIMINATION. REFERENCED PATENTS ARE AS FOLLOWS.

AMPHENOL	CHINA PATENT CN202111004800.7 & CN20212206821.X
----------	---

STP (3D) FILE RECORD  
3D FILE NAMES MAY EXCEED LENGTH REQUIREMENTS FOR SOME SOFTWARE TOOLS.

STP FILE NAME	DATE	ITEM NUMBER
SO-029A_PBXC-K4_D6p97-MR36p05x14p5Z10p25-HS_E1.S	FEB-2022	14-210
SO-029A_PBXC-K4_D9p23-MR36p05x14p5Z10p25-HS_M.2	FEB-2022	14-210

TASK GROUP CONTRIBUTORS

AMPHENOL



# CHANGE RECORD

IF THE CHANGE INVOLVES ANY WORDS ADDED OR DELETED (EXCLUDING DELETION OF ACCIDENTALLY REPEATED WORDS), THE CHANGE IS TO BE INCLUDED BELOW. PUNCTUATION CHANGES MAY OR MAY NOT BE INCLUDED.

INITIAL ISSUE: A	DATE: FEBRUARY 2022	ITEM NUMBER: 14-210
------------------	---------------------	---------------------

CHANGE RECORD HISTORY:
------------------------

INITIAL ISSUE:	DATE:	ITEM NUMBER:
----------------	-------	--------------

LOCATION:	CHANGED FROM:	CHANGED TO: